

# B396003

# 8095



### ► 主要技术特性 (Main Specifications)

- 适用导线规格 (Applicable wire) : AWG22#~18#
- 适用基板厚度 (Applicable PC board thickness) : 1.6mm
- 温度范围 (Temperature range) : -25°C~+85°C
- 额定电压 (Voltage rating) : 250V AC, DC
- 额定电流 (Current rating) : 5A AC, DC
- 接触电阻 (Contact resistance) :  $\leq 0.02\Omega$
- 绝缘电阻 (Insulation resistance) :  $\geq 1000M\Omega$
- 耐压 (Withstanding voltage) : 1500V AC/minute

### 材料及电镀规格 Material and Finish

型号 Type		材料 Material	材料厚度 Material Thickness	电镀规格 Finish
插座 WAFER	塑胶 HOUSING	PA66 UL94V-0	—	N/A
	针PIN	黄铜 Brass	1.14mm	镀锡 Tin-plated
孔座 HOUSING		PA66 UL94V-0	—	N/A
端子 TERMINAL		锡青铜 Phosphor bronze	0.25mm	镀锡 Tin-plated

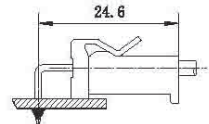
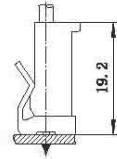
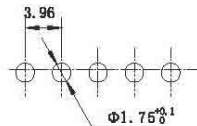
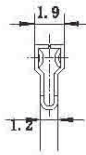
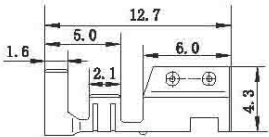
### 产品尺寸图 Product size chart

 单位: mm 一般公差:  $\pm 0.20$ 

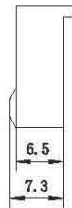
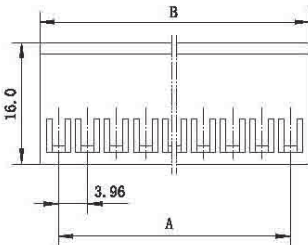
### TERMINAL

**B396003-4**   **8095**

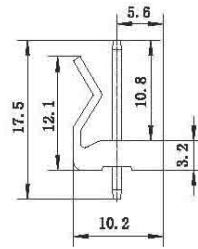
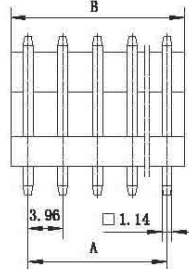
### 安装尺寸 (Mounting measurement)



### HOUSING

**B396003-2**


### WAFER

**B396003-1**


### HOUSING

### WAFER

极数 Circuits	型号 Type	尺寸 (Dimensions) mm		备注型号 P. S. Type
		A	B	
2	B396003-2-02	3.96	9.06	8095-02Y
3	B396003-2-03	7.92	13.02	8095-03Y
4	B396003-2-04	11.88	16.98	8095-04Y
5	B396003-2-05	15.84	20.94	8095-05Y
6	B396003-2-06	19.80	24.90	8095-06Y
7	B396003-2-07	23.76	28.86	8095-07Y
8	B396003-2-08	27.72	32.82	8095-08Y
9	B396003-2-09	31.68	36.78	8095-09Y
10	B396003-2-10	35.64	40.74	8095-10Y
11	B396003-2-11	39.60	44.70	8095-11Y

极数 Circuits	型号 Type	尺寸 (Dimensions) mm		备注型号 P. S. Type
		A	B	
2	B396003-1-02	3.96	7.92	8095-02A
3	B396003-1-03	7.92	11.88	8095-03A
4	B396003-1-04	11.88	15.84	8095-04A
5	B396003-1-05	15.84	19.80	8095-05A
6	B396003-1-06	19.80	23.76	8095-06A
7	B396003-1-07	23.76	27.72	8095-07A
8	B396003-1-08	27.72	31.68	8095-08A
9	B396003-1-09	31.68	35.64	8095-09A
10	B396003-1-10	35.64	39.60	8095-10A
11	B396003-1-11	39.60	43.56	8095-11A